

# LEVELS OF ORGANIZATION

**DESCRIPTION:**

**CELLS → TISSUES → ORGANS →  
ORGAN SYSTEMS → ORGANISM**

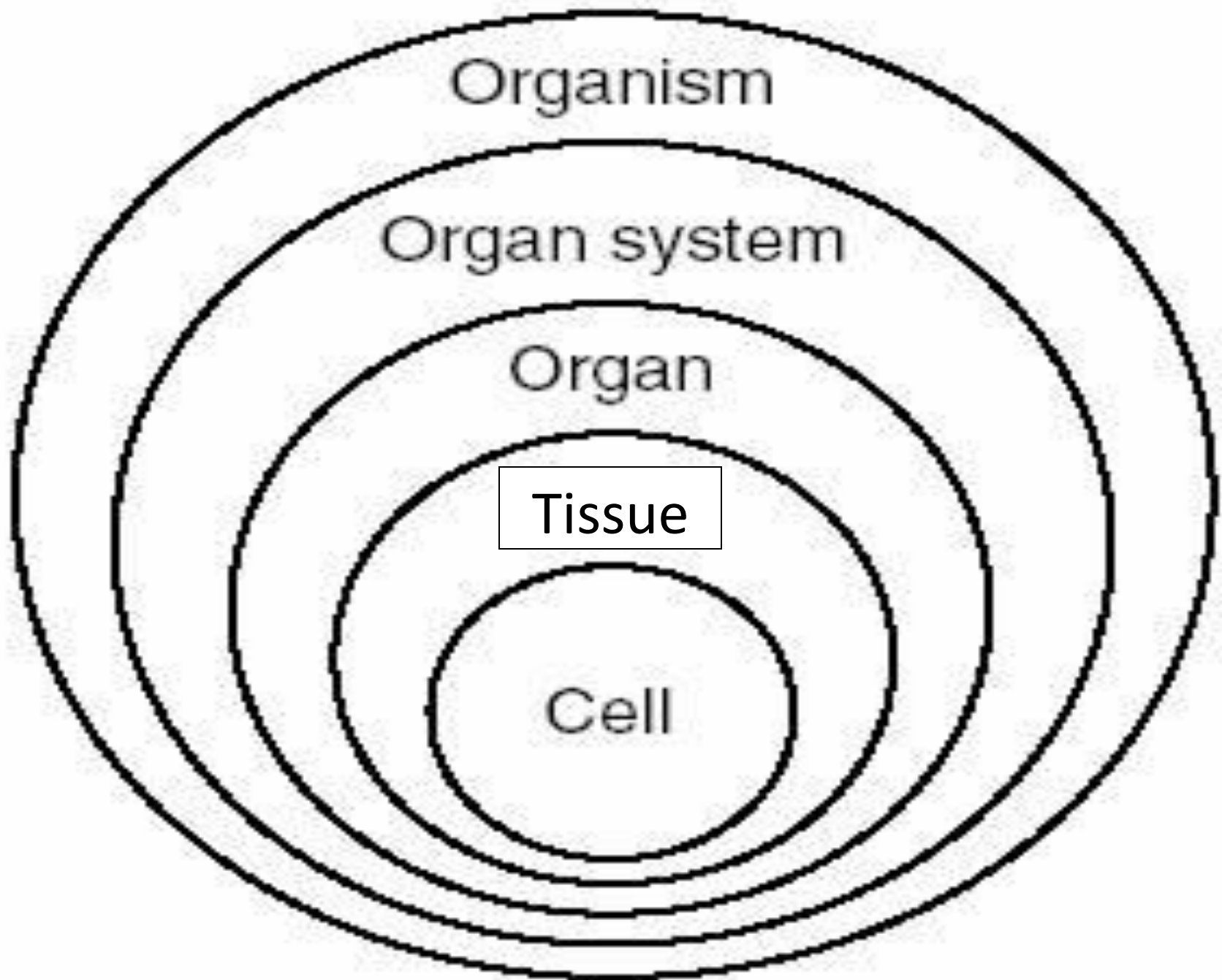
**CELL SPECIALIZATION IN  
MULTICELLULAR ORGANISMS**

**DIVISION OF LABOR (DIVIDING UP THE  
JOBS)**

**EXAMPLES:**

**IN A SCHOOL, JOBS ARE DIVIDED:  
STUDENTS, TEACHERS, PRINCIPALS,  
SROs, BUS DRIVERS, CAFETERIA  
WORKERS, CUSTODIANS, AND SO ON**

**TEACHERS: DO SPECIFIC JOBS: TEACH  
PE, SPANISH, IT, ART, CHOIR, BAND,  
MATH, LA, READING, SOCIAL STUDIES,  
SCIENCE, FACs, ORCHESTRA, SPEECH**



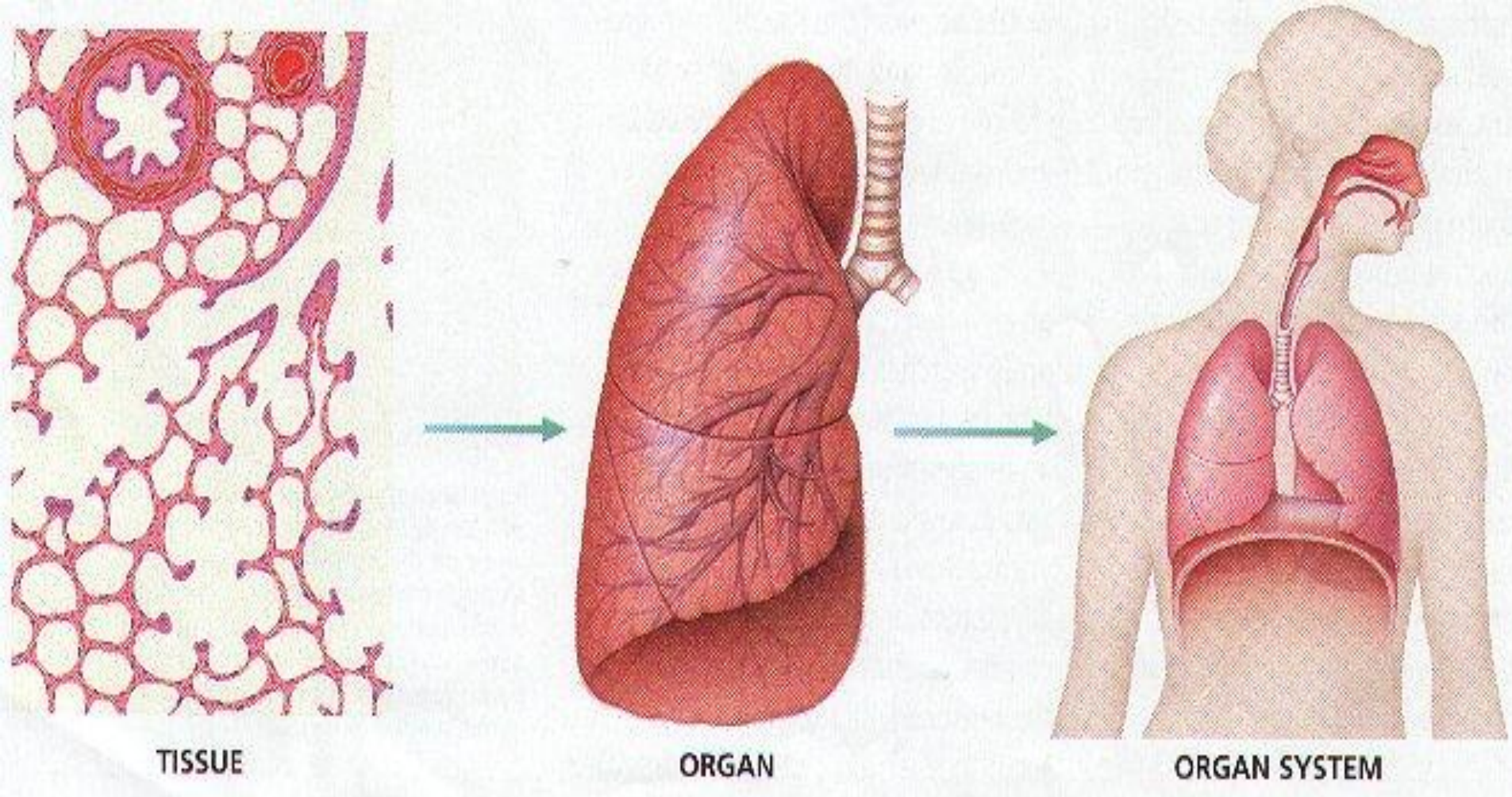
Organism

Organ system

Organ

Tissue

Cell



**Tissue = Lung tissue**  
**Organ = lung**  
**Organ system = respiratory**

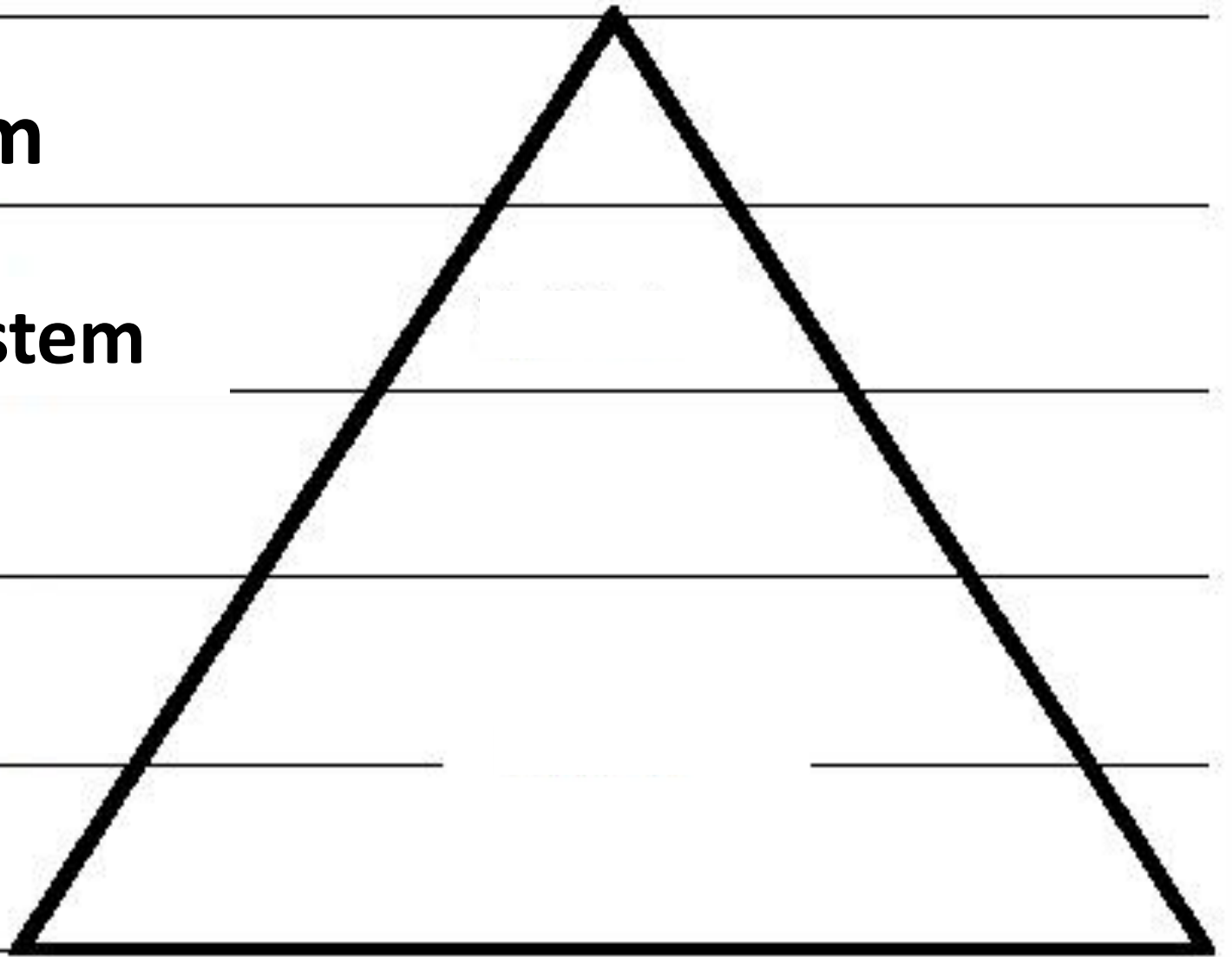
**Organism**

**Organ system**

**Organs**

**Tissues**

**Cells**



# Levels of Organization

```
graph TD; A[Levels of Organization] --> B(cells); B --> C(tissues); C --> D(organs); D --> E(systems); E --> F(organism);
```

cells

**Least complex**

tissues

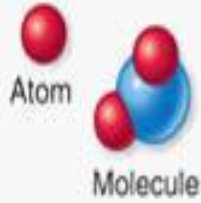
organs

systems

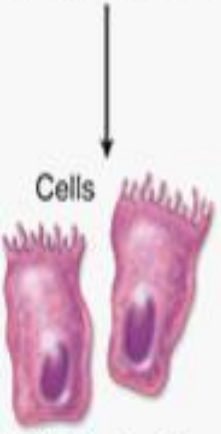
organism

**Most complex**

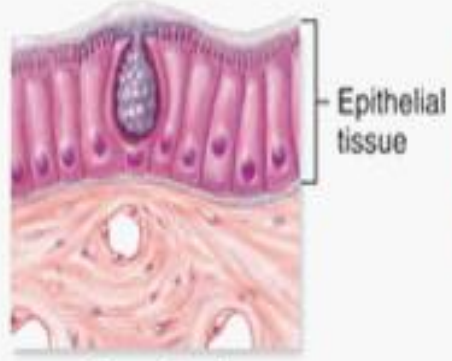
# Levels of organization



Chemical level



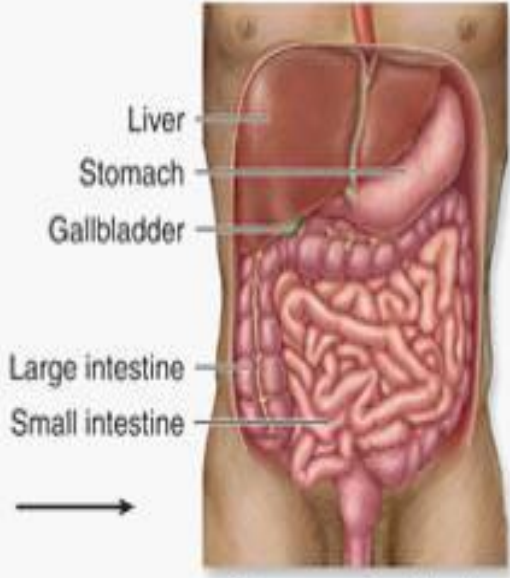
Cellular level



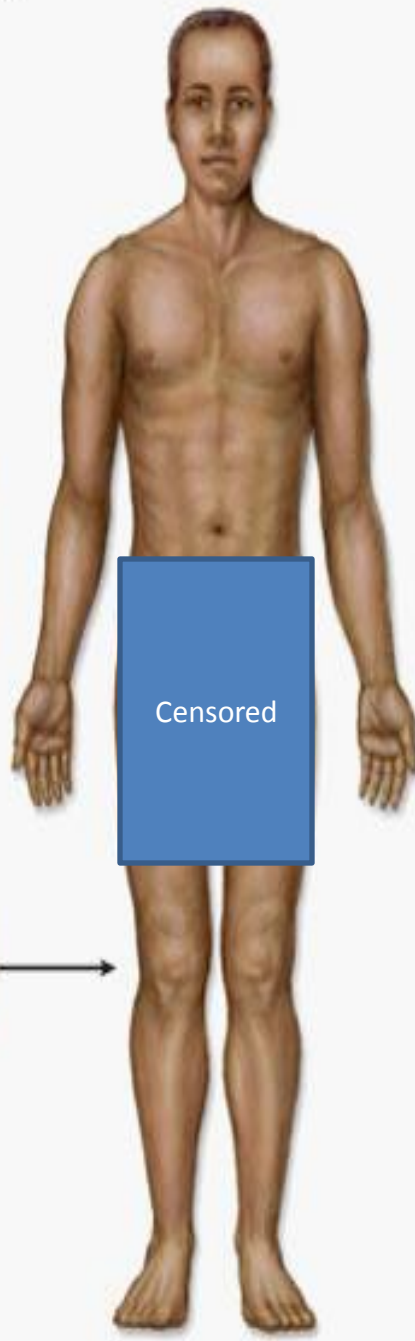
Tissue level



Organ level



Organ system level



Organismal level