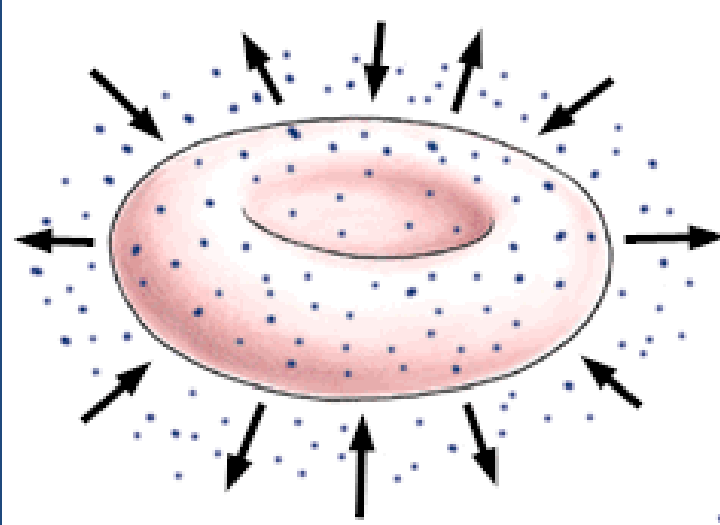


# OSMOSIS

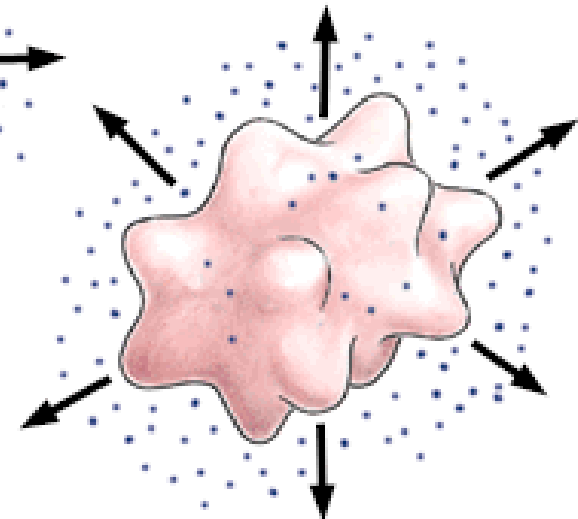
- NO ENERGY IS USED (Passive transport)
- **DIFFUSION OF WATER**
- MOVEMENT OF WATER MOLECULES FROM A HIGH CONCENTRATION (A LOT) TO A LOW CONCENTRATION (A LITTLE)
- **GOAL: EQUAL AMOUNTS OF WATER ON BOTH SIDES OF THE MEMBRANE**

# POSSIBLE OSMOSIS DRAWINGS:

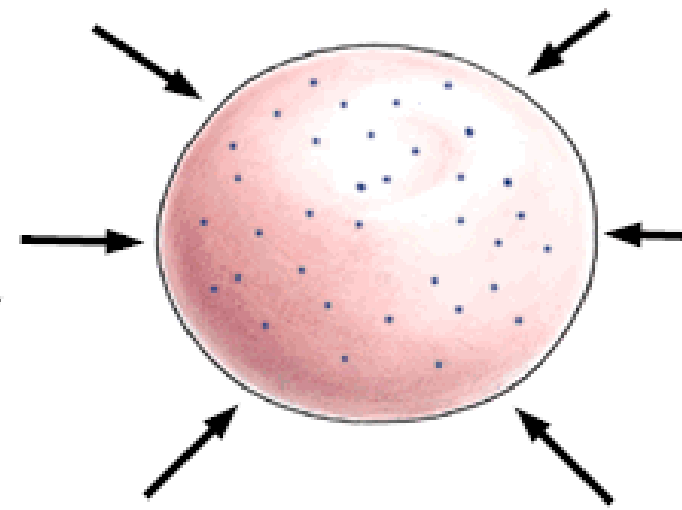
- EGG BEFORE AND AFTER
- LETTUCE BEFORE AND AFTER
- CELERY BEFORE AND AFTER
- PLANT (VACUOLES) BEFORE AND AFTER
- FLOWER BEFORE AND AFTER



Isotonic medium



Hypertonic medium



Hypotonic medium

